

## Bellarine Peninsula | 4 nights, 4 games

This area has grown significantly in golfing terms with the addition of a large number of new courses over the last 5 years. The region is an ideal self drive location where you start at the beginning of the Peninsula and over 2 to 5 days can meander your way through series of new and well established courses — each offering different golfing challenges. This 4 night package combines quality, well located accommodation with 4 games of golf on the best courses in the region.



## At a Glance

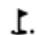
<b>Package</b>	4 nights / 4 games
<b>When</b>	Flexible dates as desired
<b>Accommodation</b>	4 x nights at Barwon Heads GC (3.5 star) - twin share
<b>Golf</b>	(4 games with shared motorised carts) 1 x Thirteenth Beach Golf Links (Beach) 1 x The Sands, Torquay 1 x Barwon Heads GC 1 x Thirteenth Beach Golf Links (Creek)
<b>Drive</b>	Self drive (Car Hire or Luxury Transfers available at additional cost)
<b>Other</b>	GOLFSelect Survival Pack
<b>Pricing</b>	from AUD \$849.00 per person- twin share


Day	Golf	Accommodation
-----	------	---------------

## Itinerary Day-by-Day

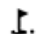
### Day 1


 Arrive and check into accommodation.

 **Thirteenth Beach Golf Links (Beach Course)** (18 holes of golf with shared motorised cart)  
The Beach Course at Thirteenth Beach Golf Links was opened in December 2001. Located on the stunning Bellarine Peninsula in Victoria, the challenging and natural links style course has received high accolades by many golfing publications. Many of the holes on the course wind their way through high valleys and the fairways provide pure couch fairways from which to hit your shots. The sandy soil upon which the golf course sits ensure excellent drainage in even the heaviest of downpours.

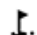
 **Barwon Heads Golf Club**  
Barwon Heads Golf Club has 19 ensuite rooms, and a variety of packages are available incorporating your stay with golf, dining and entertainment.


### Day 2

 **The Sands, Torquay** (18 holes of golf with shared motorised cart)  
The Sands Torquay is a unique links course that winds its way through the natural environment of the coastal location. Designed by Stuart Appleby, the course demonstrates his flair for providing a challenging and unique experience for the golfer. This magnificent course has been constructed with knowledge and experience to create a challenge as well as being an enjoyable play.

 **Barwon Heads Golf Club**  
Barwon Heads Golf Club has 19 ensuite rooms, and a variety of packages are available incorporating your stay with golf, dining and entertainment.

### Day 3

 **Barwon Heads Golf Club** (18 holes of golf with shared motorised cart)  
The Barwon Heads Golf Club is located near the Bass Strait, and the sand dunes along with the weather conditions provide a course reminiscent of famed Scottish links. While not especially long the links will test golfers of all standards with cleverly positioned hazards, subtle slopes and greens, along with challenging tee positions. The wind ensures that the course rarely plays the same way twice even in the one week.

 **Barwon Heads Golf Club**  
Barwon Heads Golf Club has 19 ensuite rooms, and a variety of packages are available incorporating your stay with golf, dining and entertainment.

### Day 4

---

## **Thirteenth Beach Golf Links (Creek Course)** (18 holes of golf with shared motorised cart)

Thirteenth Beach Golf Links was once an asparagus farm and is now one of the finest golf courses in the land. Set on the stunning Bellarine Peninsula in Victoria, Thirteenth Beach is a 36 hole golf and residential complex. The challenging and natural links style Beach course has already received high accolades. The Creek course, designed by Tony Cashmore in conjunction with 6 time major championship winner Nick Faldo, is a wonderful complement to the Beach course.

---

## **Barwon Heads Golf Club**

Barwon Heads Golf Club has 19 ensuite rooms, and a variety of packages are available incorporating your stay with golf, dining and entertainment.

---

## **Day 5**

---

 Check out of accommodation and head home.

## Golf Courses

---

### Barwon Heads Golf Club



Golf Links Road, Barwon Heads, VIC, 3227  
Australia

*Region:* Bellarine Peninsula, Surfcoast & Shipwreck Coast



The Barwon Heads Golf Club is located near the Bass Strait, and the sand dunes along with the weather conditions provide a course reminiscent of famed Scottish links. While not especially long the links will test golfers of all standards with cleverly positioned hazards, subtle slopes and greens, along with challenging tee positions. The wind ensures that the course rarely plays the same way twice even in the one week.

---

### The Sands, Torquay



2 Sands Boulevard, Torquay, VIC, 3228  
Australia

*Region:* Bellarine Peninsula, Surfcoast & Shipwreck Coast



The Sands Torquay is a unique links course that winds its way through the natural environment of the coastal location. Designed by Stuart Appleby, the course demonstrates his flair for providing a challenging and unique experience for the golfer. This magnificent course has been constructed with knowledge and experience to create a challenge as well as being an enjoyable play.

## Thirteenth Beach Golf Links (Beach Course)



Geelong Barwon Heads Road, Barwon Heads, VIC, 3227  
Australia

*Region:* Bellarine Peninsula, Surfcoast & Shipwreck Coast



The Beach Course at Thirteenth Beach Golf Links was opened in December 2001. Located on the stunning Bellarine Peninsula in Victoria, the challenging and natural links style course has received high accolades by many golfing publications. Many of the holes on the course wind their way through high valleys and the fairways provide pure couch fairways from which to hit your shots. The sandy soil upon which the golf course sits ensure excellent drainage in even the heaviest of downpours.

## Thirteenth Beach Golf Links (Creek Course)



Geelong Barwon Heads Road, Barwon Heads, VIC, 3227  
Australia

*Region:* Bellarine Peninsula, Surfcoast & Shipwreck Coast



Thirteenth Beach Golf Links was once an asparagus farm and is now one of the finest golf courses in the land. Set on the stunning Bellarine Peninsula in Victoria, Thirteenth Beach is a 36 hole golf and residential complex. The challenging and natural links style Beach course has already received high accolades. The Creek course, designed by Tony Cashmore in conjunction with 6 time major championship winner Nick Faldo, is a wonderful complement to the Beach course.



## Accommodation

---

### Barwon Heads Golf Club



Golf Links Road, Barwon Heads, VIC, 3227  
Australia

*Region:* Bellarine Peninsula, Surfcoast & Shipwreck Coast

Barwon Heads Golf Club has 19 ensuite rooms, and a variety of packages are available incorporating your stay with golf, dining and entertainment.

---



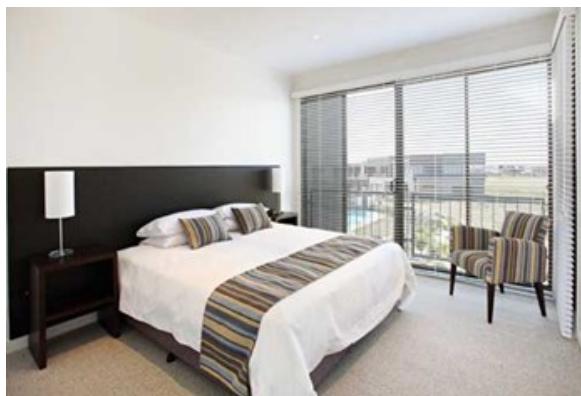
### Golf Retreats Torquay



Coast Resort at The Sands Torquay, Coast Drive, Torquay,  
VIC, 3228  
Australia

*Region:* Bellarine Peninsula, Surfcoast & Shipwreck Coast

Golf Retreats Torquay offer luxury accommodation and golf oriented holiday packages, and is located within walking distance to The Sands Torquay and close proximity to a number of other Surfcoast golf courses.



---

## About Us

GOLFSelect is a **golf holiday** specialist. Our relationships with Australia's best golf courses, plus our extensive international network of golf travel partners, allows us to organise unique and never-to-be-forgotten golf holidays both within **Australia** and around the **world**.



## Enquire Now

Want more information? Get in touch!

<b>Address</b>	PO Box 7350, Beaumaris, Victoria, 3193, AUSTRALIA
<b>Phone</b>	61 3 9563 6776
<b>Email</b>	<a href="mailto:travel@golfselect.com.au">travel@golfselect.com.au</a>